

Master Trail Plan



1 Inch = 4,500 Feet

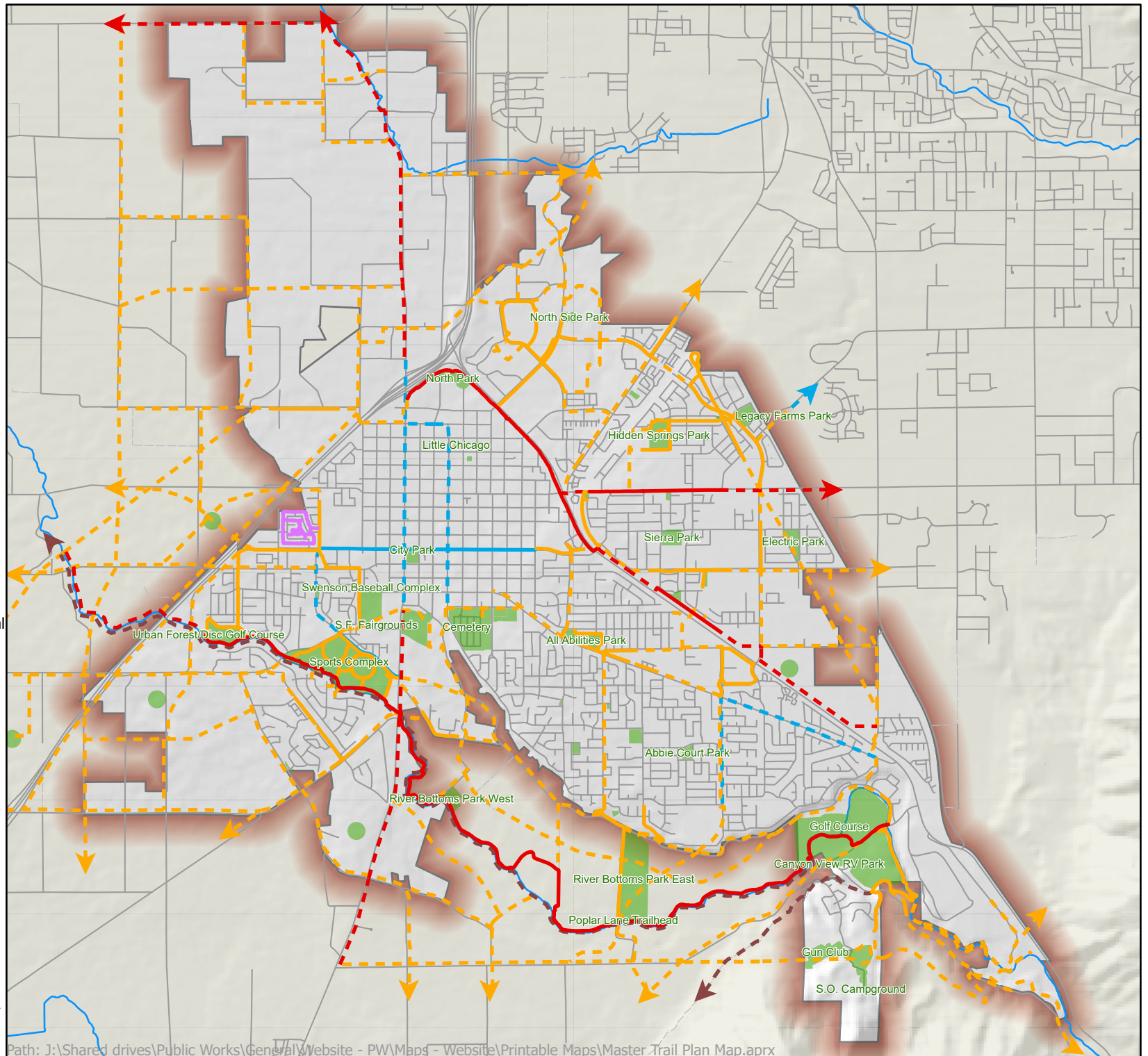
Existing Trails

Trail Type, Classification

- Bike Lane, Local
- - - Shared Use Path, Local
- - - Shared Use Path, Private
- - - Shared Use Path, Regional

Future Trails

- - - Bike Lane, Local
- - - Shared Use Path, Local
- - - Shared Use Path, Regional
- - - Unpaved Shared Use Path, Regional



Spanish Fork City GIS
 40 South Main Street
 Spanish Fork, UT 84660
 GIS Administrator (801) 804-4571
 GIS Interns (801) 804-4588

Disclaimer: Spanish Fork City makes no warranty with respect to the accuracy, completeness, or usefulness of these maps. Spanish Fork City assumes no liability for direct, indirect, special, or consequential damages resulting from the use or misuse of these maps or any of the information contained herein. Portions may be copied for incidental uses, but may not be resold.

Date Printed: 7/27/2023