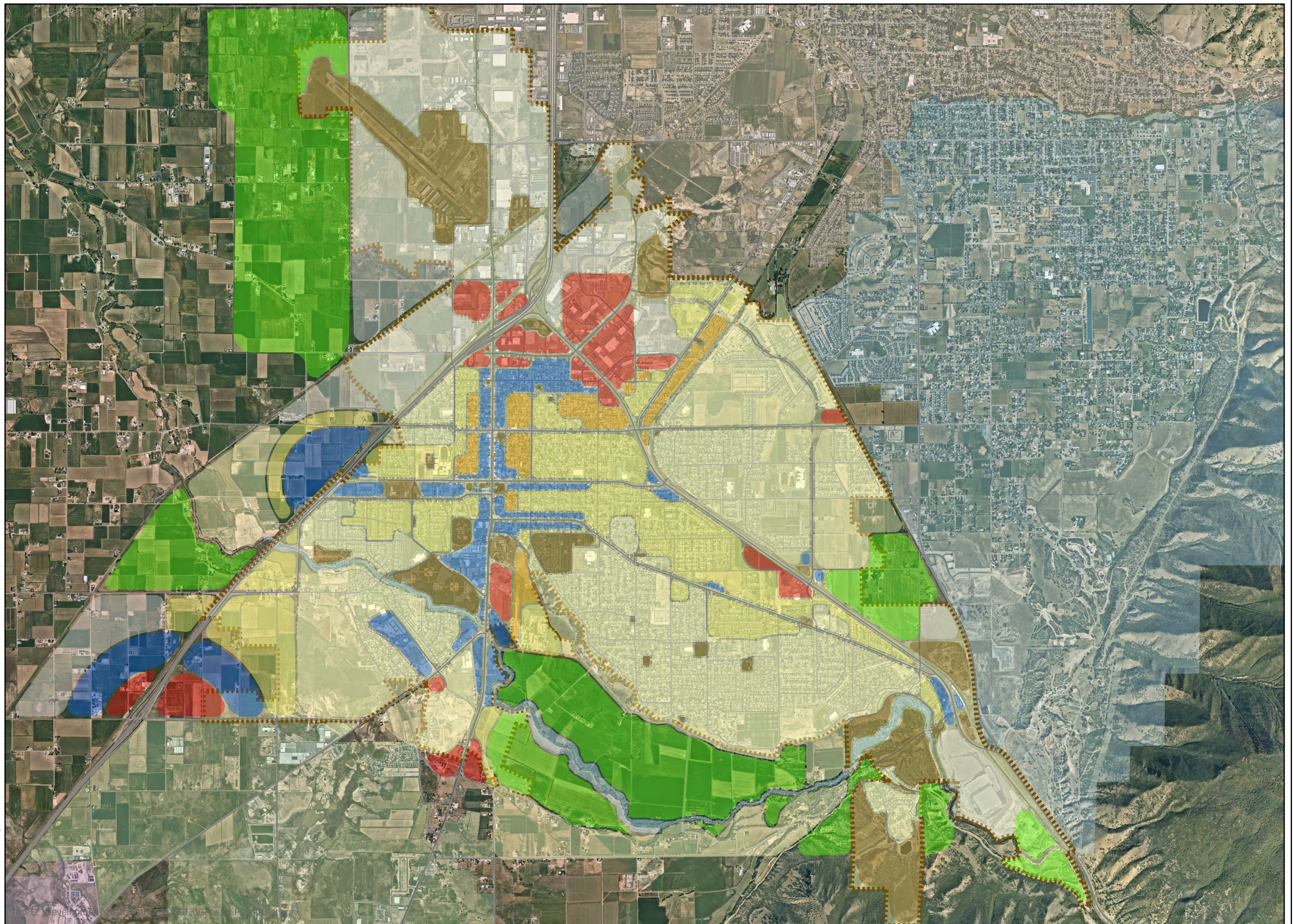


General Plan 2013

1" = 3,315 Ft

Legend

- Agricultural
- Commercial
- Floodplain (FLOODWAY)
- Industrial
- Low Density Residential
- Medium Density Residential
- High Density Residential
- Mixed Use
- Public Facilities



Print Date: 11/9/2021

Spanish Fork City GIS
40 South Main St
Spanish Fork, UT 84660
GIS Phone Numbers:
(801) 804-4571 (Administrator)
(801) 804-4570 (Intern)
(801) 804-4572 (Intern)

Disclaimer: Spanish Fork City makes no warranty with respect to the accuracy, completeness, or usefulness of these maps. Spanish Fork City assumes no liability for direct, indirect, special, or consequential damages resulting from the use or misuse of these maps or any of the information contained herein. Portions may be copied for incidental uses, but may not be resold.