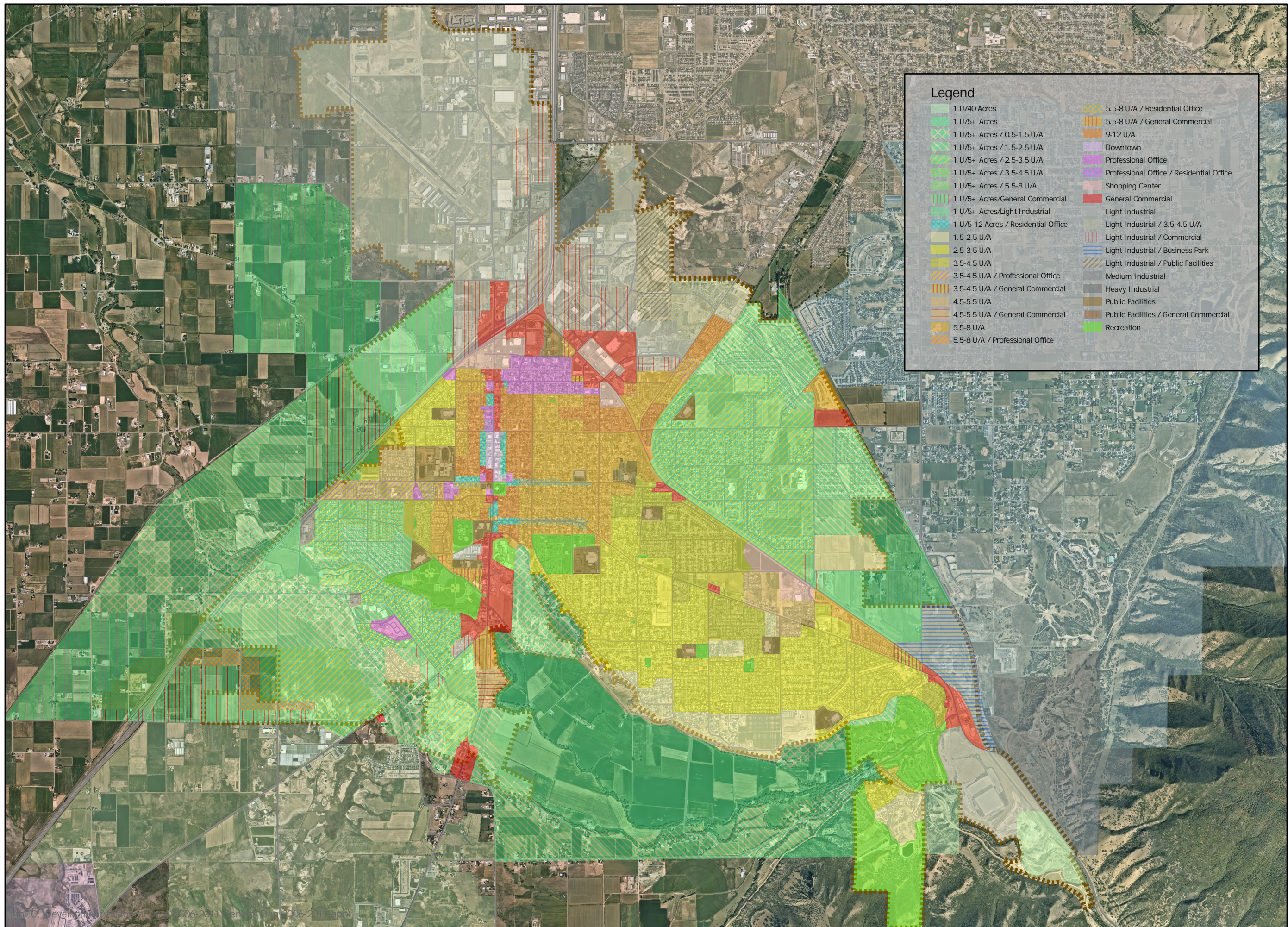


# General Plan 2006-2011

1" = 3,315 Ft



Legend	
1 U/40 Acres	5.5-8 U/A / Residential Office
1 U/5+ Acres	5.5-8 U/A / General Commercial
1 U/5+ Acres / 0.5-1.5 U/A	9-12 U/A
1 U/5+ Acres / 1.5-2.5 U/A	Downtown
1 U/5+ Acres / 2.5-3.5 U/A	Professional Office
1 U/5+ Acres / 3.5-4.5 U/A	Professional Office / Residential Office
1 U/5+ Acres / 5.5-8 U/A	Shopping Center
1 U/5+ Acres/General Commercial	General Commercial
1 U/5+ Acres/Light Industrial	Light Industrial
1 U/5-12 Acres / Residential Office	Light Industrial / 3.5-4.5 U/A
1.5-2.5 U/A	Light Industrial / Commercial
2.5-3.5 U/A	Light Industrial / Business Park
3.5-4.5 U/A	Light Industrial / Public Facilities
3.5-4.5 U/A / Professional Office	Medium Industrial
3.5-4.5 U/A / General Commercial	Heavy Industrial
4.5-5.5 U/A	Public Facilities
4.5-5.5 U/A / General Commercial	Public Facilities / General Commercial
5.5-8 U/A	Recreation
5.5-8 U/A / Professional Office	



Print Date: 11/9/2021

Spanish Fork City GIS  
40 South Main St  
Spanish Fork, UT 84660  
GIS Phone Numbers:  
(801) 804-4571 (Administrator)  
(801) 804-4570 (Intern)  
(801) 804-4572 (Intern)

Disclaimer: Spanish Fork City makes no warranty with respect to the accuracy, completeness, or usefulness of these maps. Spanish Fork City assumes no liability for direct, indirect, special, or consequential damages resulting from the use or misuse of these maps or any of the information contained herein. Portions may be copied for incidental uses, but may not be resold.